



# **The Western Australian Caves Board**

**Elery Hamilton-Smith**





# **A Long History . . .**

-  **1826 Charles Fraser visited and described the cave at Cape Leeuwin**
-  **1840 – 1900 Further discoveries by various residents, but in particular by the Bussell and Brockman families**



# **Growing Pressure for Cave Protection . . .**

📄 **But no action until Mrs Brockman  
(formerly Frances Bussell) wrote to  
the Premier in 1900.**



# Charles Erskine May

📁 Sent to inspect and report in 1900

📁 An impassioned plea for not only protection of the caves, but also recognition of the beauty and values of the region as a whole



# **Then Surveyor Marmaduke Terry**

- 📁 **Undertook a comprehensive survey which accurately located the known caves and discovered many more**





# Protection and Reservation . . .

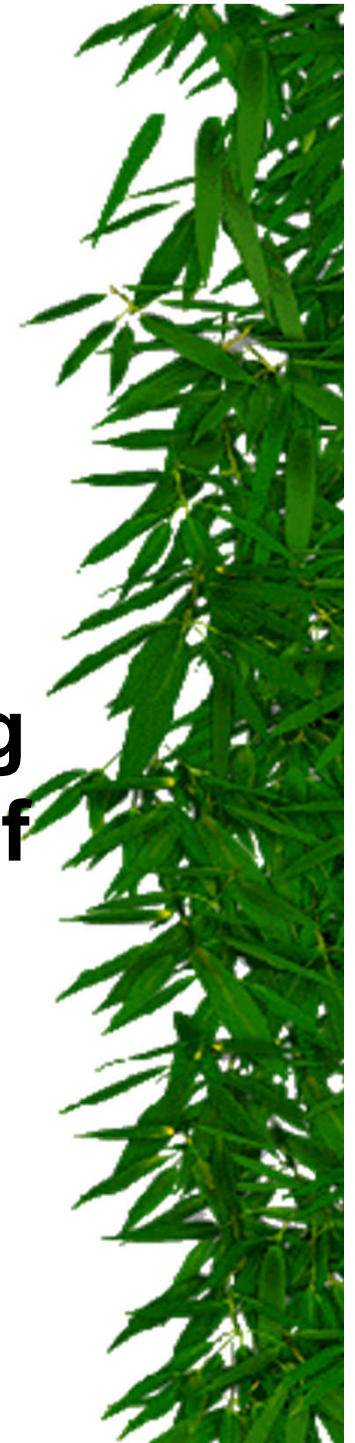
- 📖 Initial proposal to set aside 12,000ha.
- 📖 Reduced to 12 reserves, each of 40 ha.around cave entrances
- 📖 J.W. Hackett fought for increased area, but this only came in the 1970s with the establishment of the Leeuwin-Naturaliste National Park (19,700 ha.)



# **The Caves Board. . .**

📁 **Appointed in 1901**

📁 **An energetic program of developing stairs and pathways, gating many of the caves, appointing guides, arranging travel and accommodation for visitors**



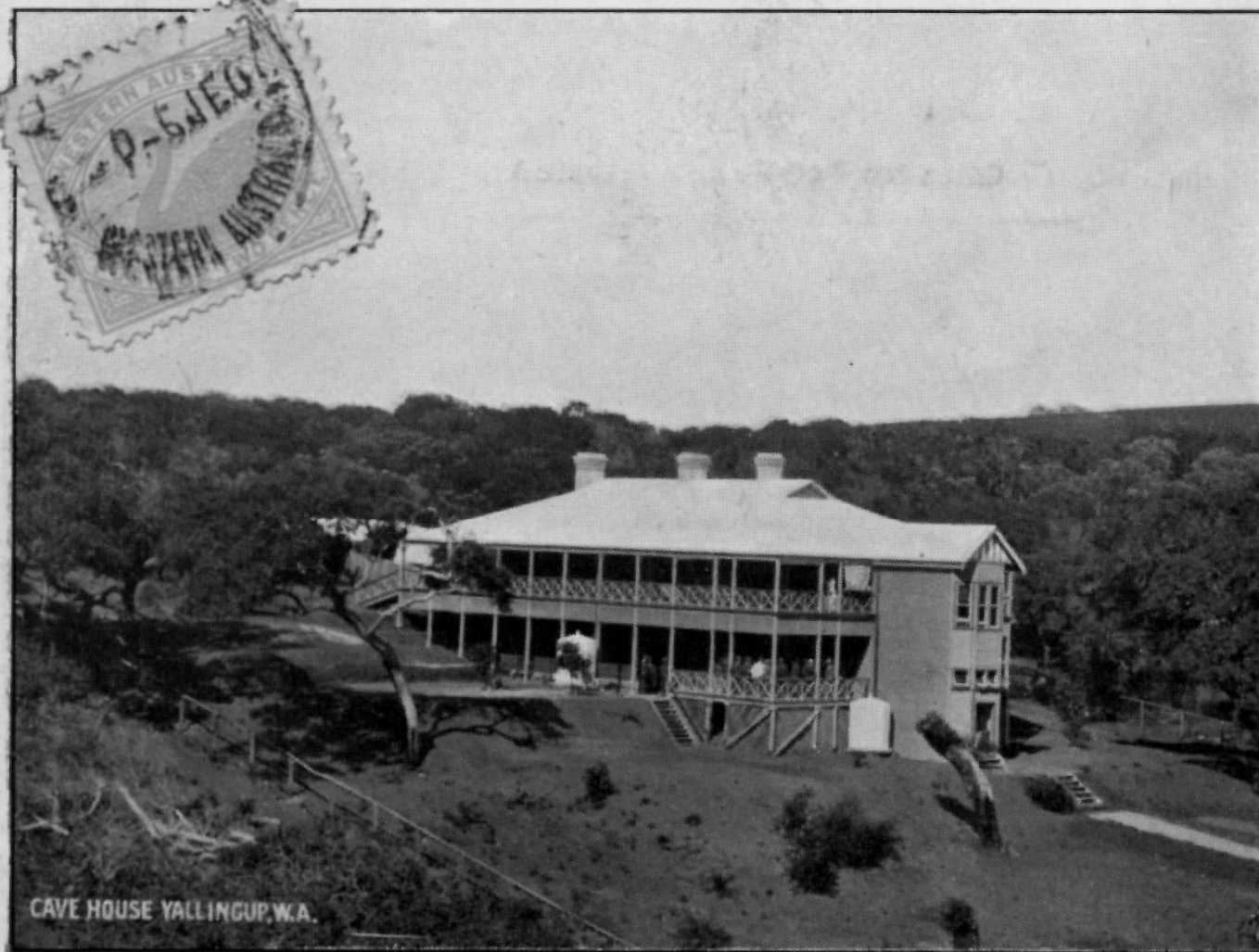


"ELLENSBROOKE," ACCOMMODATION HOUSE, MARGARET RIVER CAVES, W.A.

# **Accommodation Houses . . .**

- 🏠 **At first existing homes were adapted as guest houses**
- 🏠 **But this was followed by Construction of the Caves Hotel at Yallingup**





CAVE HOUSE YALLINCUP, W.A.


WESTERN AUSTRALIAN CAVES.

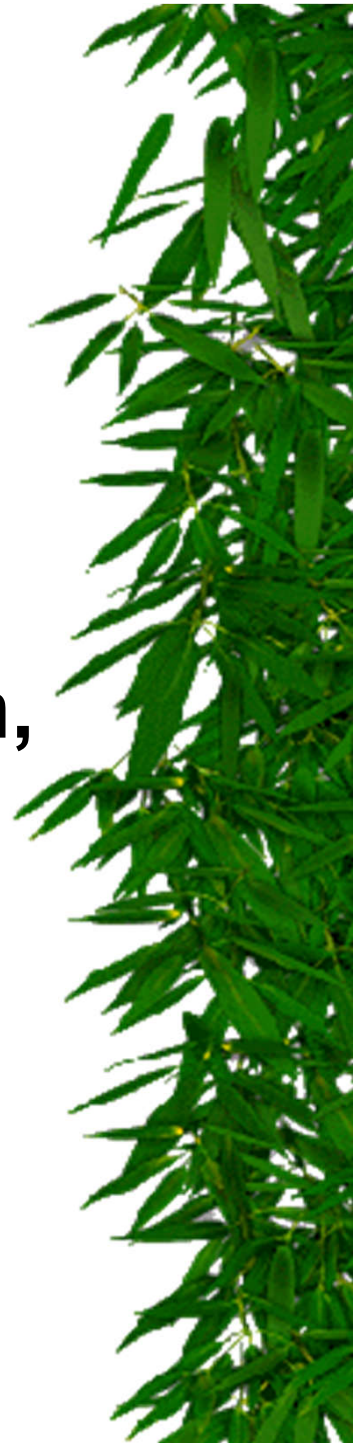
# Publicity. . .

- 📄 Posters
- 📄 Photographs in Railway Carriages
- 📄 Postcards
- 📄 Framed Photographs
- 📄 Lantern Slides
- 📄 Pamphlets
- 📄 Exhibitions



# **The Coupon System. . .**

-  **A booklet of vouchers which provided for rail travel to Busselton, coach travel through the region, overnight accommodation and meals, and tickets for the caves.**



Tel. 1044.

# The Western Australian Caves

## Some Advantages of a Coupon.

**RETURN PORTIONS** of Rail and Coach are good for One Calendar Month from date of Issue.

**BOOKING.**—Railway Tickets are issued at the following Stations :—Fremantle, Perth, Claremont, Armadale.

**BREAK OF JOURNEY.**—Holders of Caves Board Coupons can break railway journey *en route* to or from Busselton (without extra charge) on showing Coupon railway ticket, and paying ordinary fare from junction at which journey is broken (Brunswick, Picton, or Boyanup).

**ALL RETURN PORTIONS** available to Fremantle or any intermediate Station.

**HOLDERS** of Cave Board Coupons can travel by any train.

**HOTELS.**—Coupons are accepted at all Hotels in Busselton.

**COUPONISTS** have the right to break Coach journey at Yallingup, either going to or returning from the Margaret River. (See Coupons.)

---

### PRICE OF COUPONS.

YALLINGUP (3 days) ... .. £3 0s. 0d.

YALLINGUP-MARGARET RIVER (5 days) ... £5 5s. 0d.

(Covering Train, Coach and Hotel Expenses).

**Second Class Railway Tickets issued if required**

**Cheap Excursions at Christmas and Easter Time.**

(See Papers).

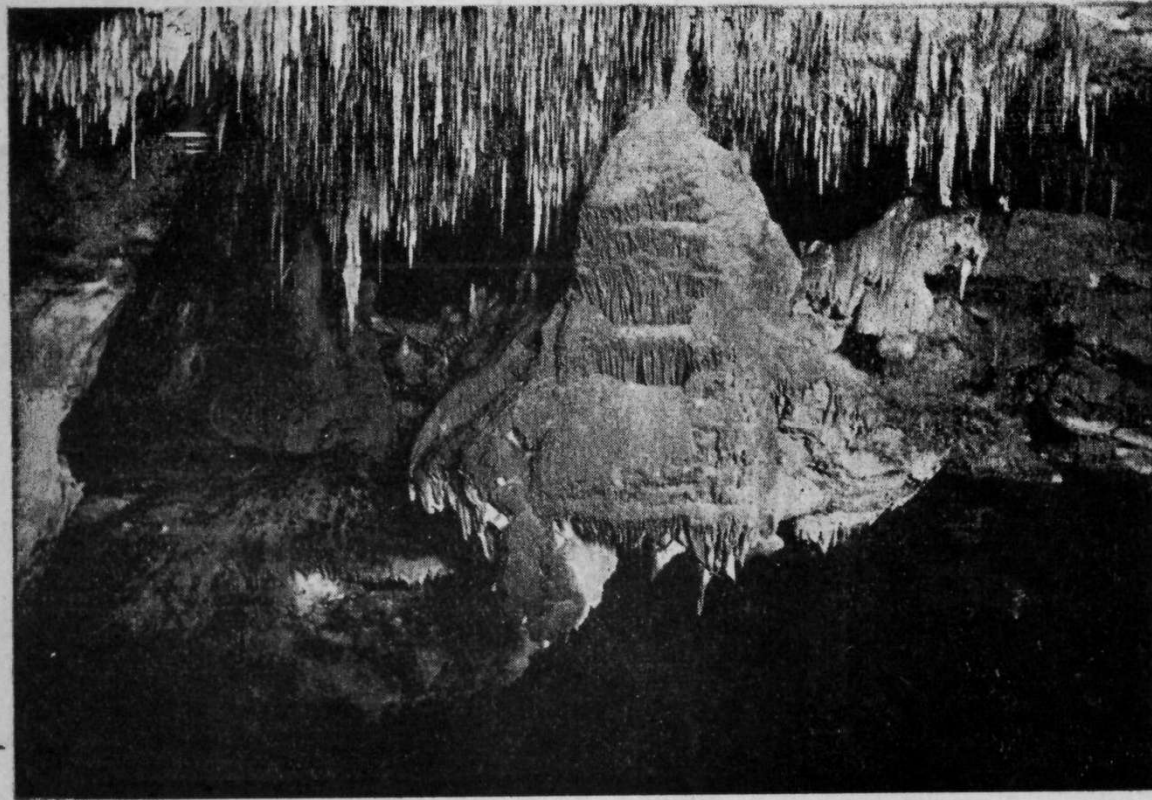
*For Further particulars, apply :—*

*SECRETARY CAVES BOARD,  
South British Chambers, Perth, Western Australia.*

---






**Now for some postcards . . .**



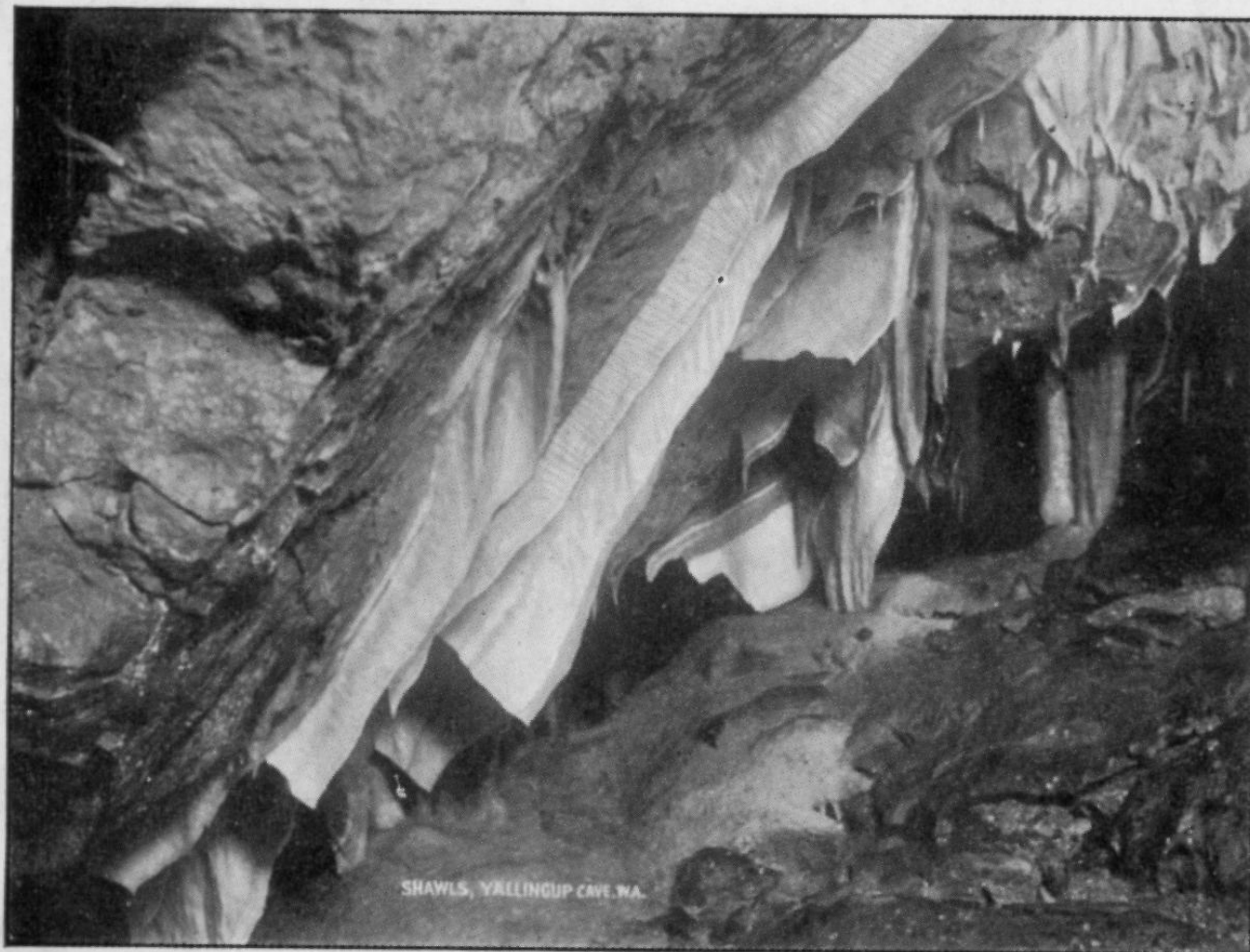
**"The SUSPENDED DOME," Calgardup Cave, Western Australia.**



# **The Caves Board . .**

-  **This card is from the first series**
-  **Photographs by Morison from the Department of Lands and Survey**
-  **Poor quality card with no imprint**





SHAWLS, YALLINGUP CAVE, WA.

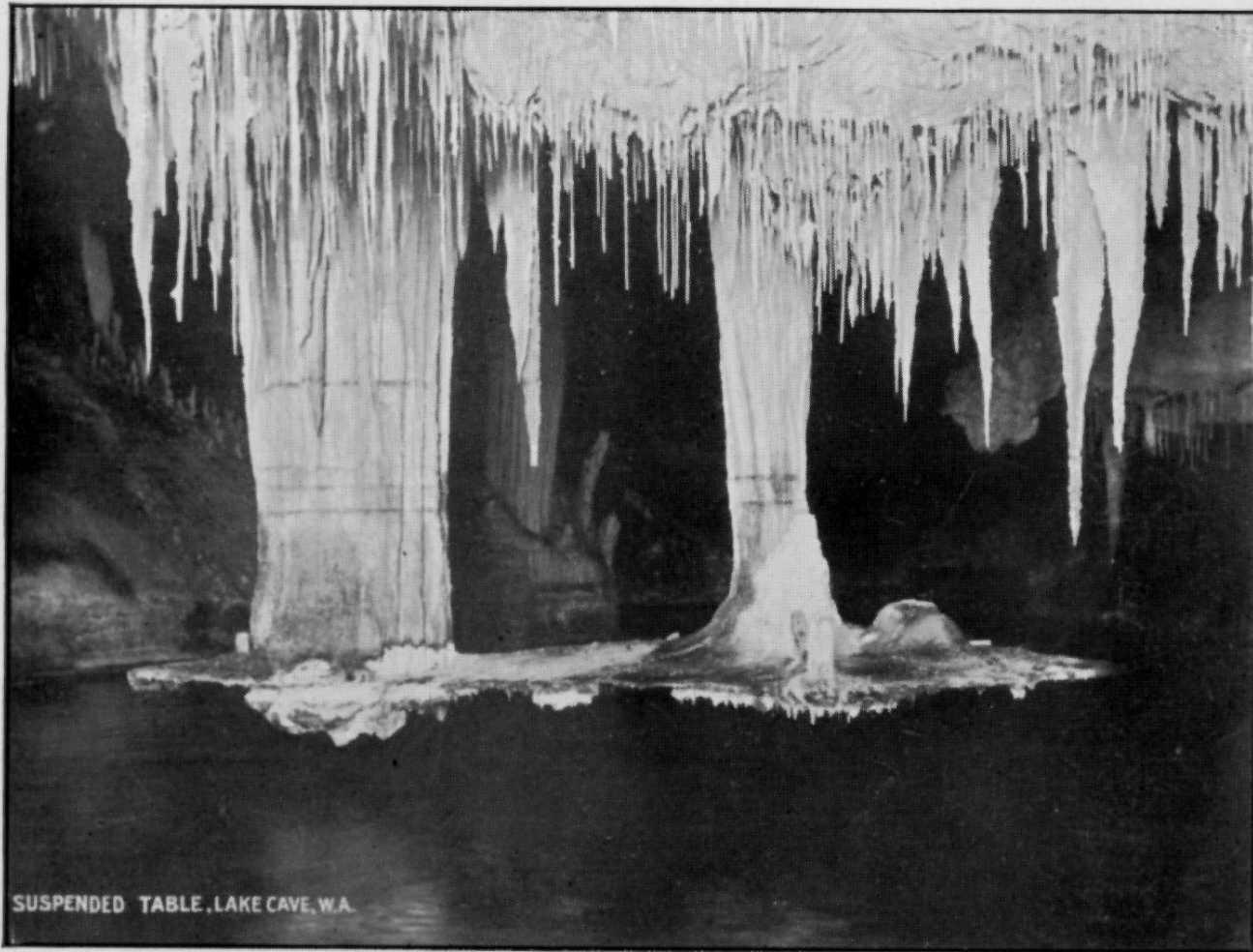
WESTERN AUSTRALIAN CAVES.

# Second Series . . .

📄 **A great Improvement**

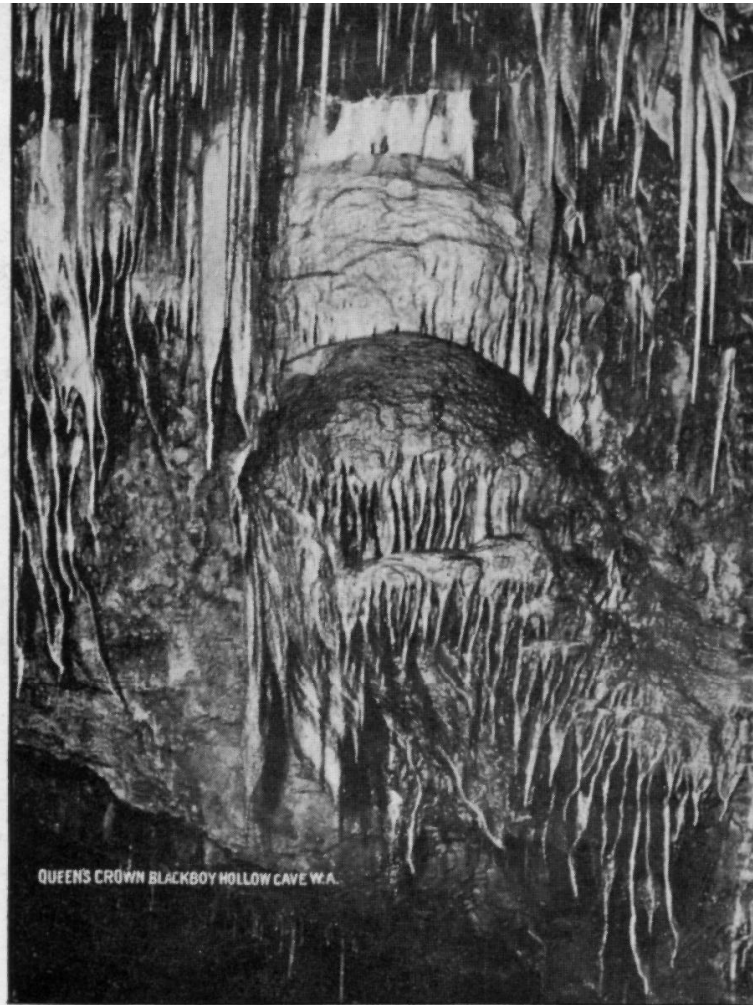
📄 **Plain back but with imprint**





SUSPENDED TABLE, LAKE CAVE, W.A.

WESTERN AUSTRALIAN CAVES.



QUEENS CROWN BLACKBOY HOLLOW CAVE W.A.

WESTERN AUSTRALIAN CAVES.



# POST CARD.

(Issued by the Caves Board of Western Australia.)

---

AFFIX  
STAMP  
HERE.

# **The Third Series . . .**

- 📄 **Again, a high quality of printing, and with the Black Swan on the back.**
- 📄 **Both these later series appear to have been taken by that famous photograph, Anon.**



2  
Post



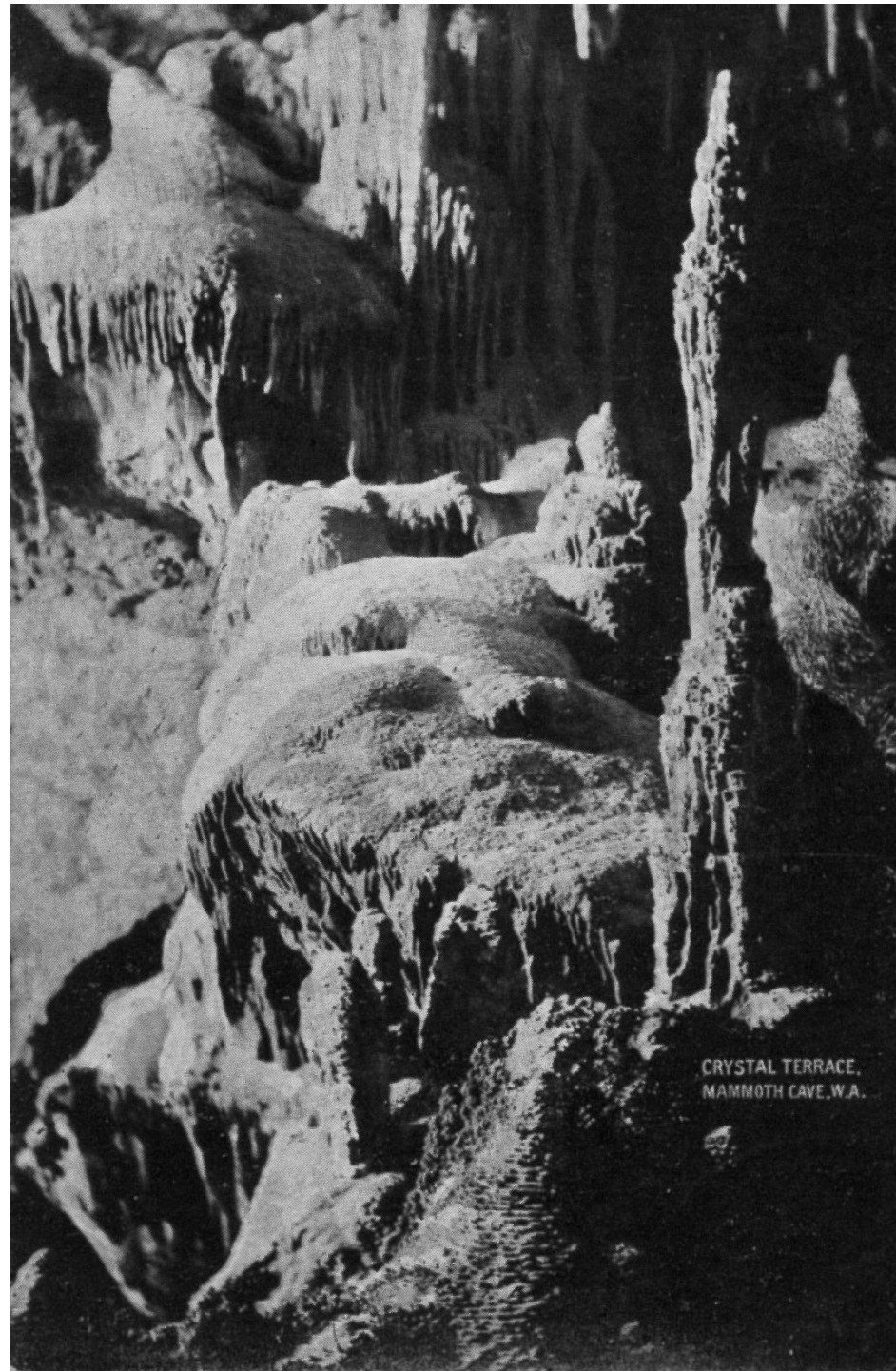
Card.

"Cygnis-Insignis."

*(Issued by the Caves Board of Western Australia.)*

**Correspondence.**

**Address only to be written here.**





"ROBERTA HALL"  
GOLGOTHA CAVE  
WESTERN AUSTRALIA  
(COPYRIGHT)

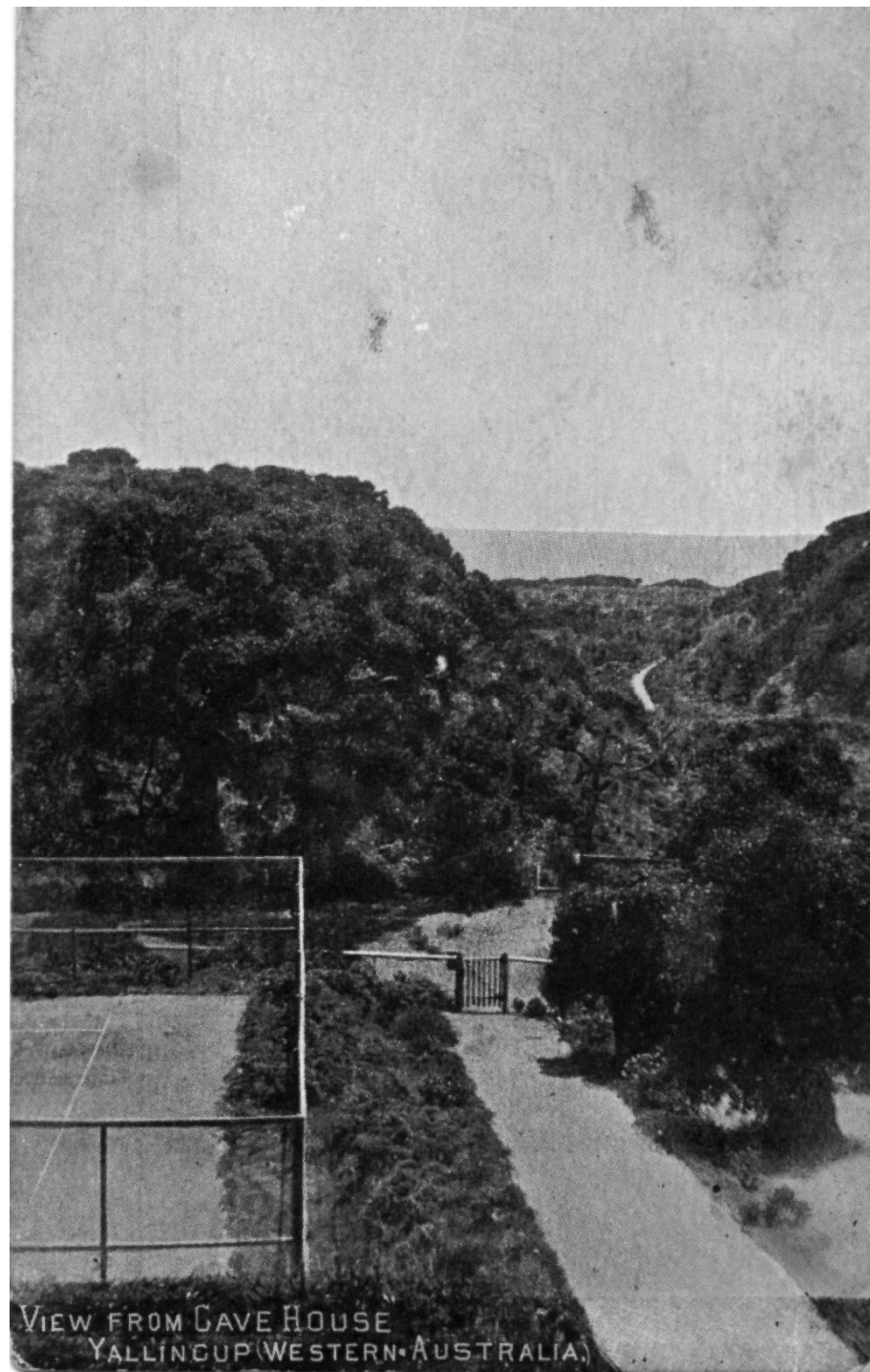


ENTRANCE TO YALLINGUP CAVE, W.A.

# **By this time . . .**

- 📄 **The postcards start to show a recognition of the surface landscapes and Erskine May's vision of the South-west as a great resort.**





VIEW FROM CAVE HOUSE  
YALLINGUP (WESTERN AUSTRALIA)



# **The “Tourist Bureau” . . .**

- 📄 **A new agency with a complex sequence of name changes**
- 📄 **Edward Dawson had been a field assistant to Marmaduke Terry, discovered Yallingup Cave in 1900 and remained as manager and guide for 37 years.**





Shawls.

Perth W.A. Aug 30/05

Yallingup Cave W. A.

# Various commercial publishers . . .

📁 Foy and Gibson

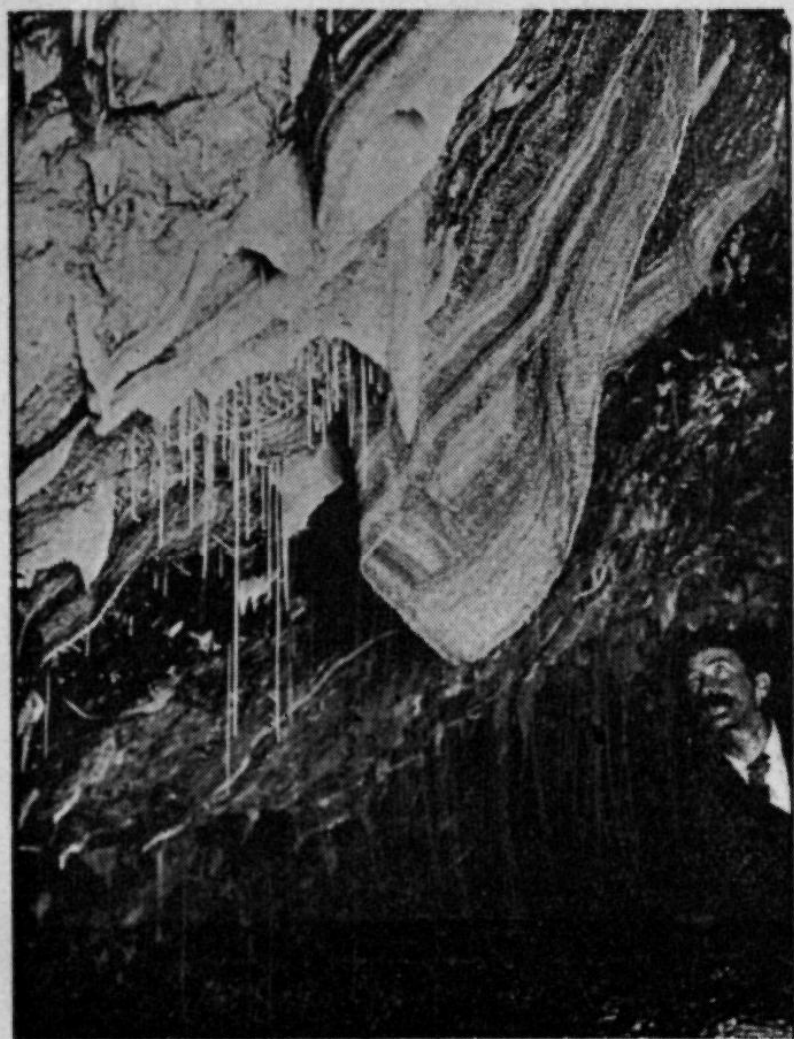
📁 P.S. Bignell

📁 J.H.A. MacDougall of Walden Studios





Entrance to Lake Cave W. A.



SHAWL, YALLINGUP CAVE.

Bussellon  
July 23<sup>rd</sup> 1907

Dear Madam.

Will you kindly note that  
Mr. S.S. Biquell. Surgeon. Dentist.  
May be Consulted at my Pharmacy  
on Friday evening, Saturday,  
Sunday & Monday until 11 o'clock.

Faithfully Yours

P. S. Biquell  
*P.S.B.*

PRINTED FOR P. S. BIGNELL, BUSSELTON.



THE BATH TOWEL.

YALLINGUP CAVE, W.A. 93797/2 Copyright, J. H. MacDougall

